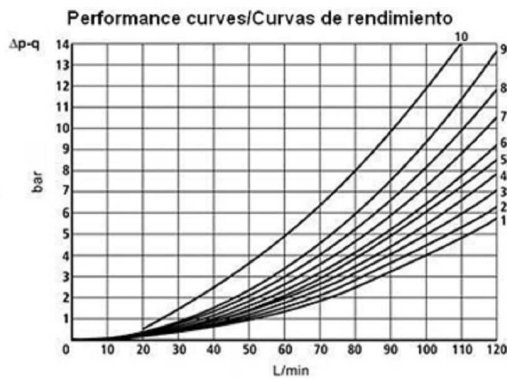
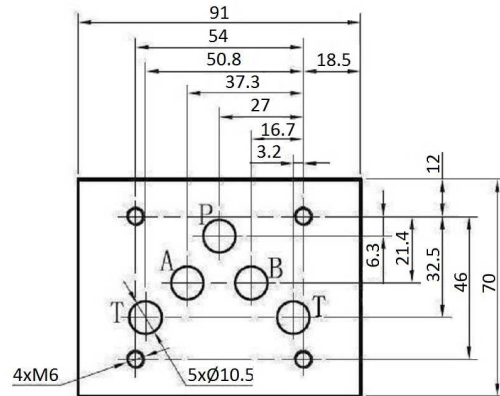
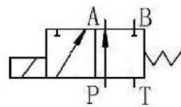


Solenoid valves

NG10 Solenoid valve

NG10 Solenoid valve - spool no.41A

Page: 1/1



Spool / Corredera	Flow path / Trayectoria flujo			
	P-A	P-B	A-T	B-T
1	1	1	4	4
2	3	3	6	7
3	1	1	6	7
6	1	1	3	3
3A	-	1	6	-
41A	3	3	-	-
51A	3	3	4	5

Electric Connectors with LED

4 Screw Set Included M6 x 40

Operating Pressure · A, B, P: 315 bar
· T: 160 bar

Cast iron body

Part nº	Size	Voltage (V)	Max. flow (l/min)	Max. Press. (bar)	f (Hz)	Ø nucleus
KVNG10-41A-12CC H	NG-10	12 VDC	120	315		31,4
KVNG10-41A-24CC H	NG-10	24 VDC	120	315		31
KVNG10-41A-220CA H	NG-10	220 VAC	120	315	50	31,4

*** Review attached PDF***